



# SCALA COELI



SCALA  
COELI



The towers were built as a way to be closer to heaven, a place where simply being there, brought great joy. But it was also a place from which to scan the horizon. Indeed, Unamuno once described Salamanca as “a high grove of towers”.

This is why climbing up to the Clerecía Towers is an experience like no other, like a breath of fresh air, to be able to really see the world and to pleasantly contemplate our future. Scala Coeli literally is a Stairway to Heaven at the top of which visitors can enjoy unparalleled breath-taking panoramic views of the city.

Scala Coeli lets visitors discover the history behind the Royal College of the Company of Jesus. The building, which today is home to the private Roman Catholic Pontificia University began life in 1617, commissioned by Queen Margaret of Austria and King Philip III of Spain, to be the main training school for Jesuits who were later dispatched to the colonies in the Americas, or the protestant countries of Central Europe. Presently, it is a wonderful example of Baroque architecture, featuring the Escalera Noble or Noble Stairway and especially the magnificent Baroque Courtyard, surrounded as it is by two floors of cloisters.

# SCALA COELI





The tour includes access to the matroneos or women's gallery, whose balconies provide great views of the inside of the Royal Clergy of Saint Mark, a wonderful spot from which to admire the high altar with its magnificent Baroque altarpiece. It is divided into three galleries. The first of them, "El principio y el fin" ("the beginning and the end" in English), features the portraits of Queen Margaret of Austria and King Philip III of Spain, as well as the documents outlining the founding of the Royal College of the Company of Jesus. The second gallery focuses on the construction of the building, while the third goes under the heading "nuevo renacer" or a new dawn.

The tour continues along the stairway access to the church's two towers. The climb up the fully restored Escalera del Campanero or bell ringer's stairway, is accompanied by atmospheric lighting and sound. The lofty heights of the passageway that crosses between the towers provide a unique insight into Salamanca, with spectacular views over the historic centre of this wonderful cultural heritage city.

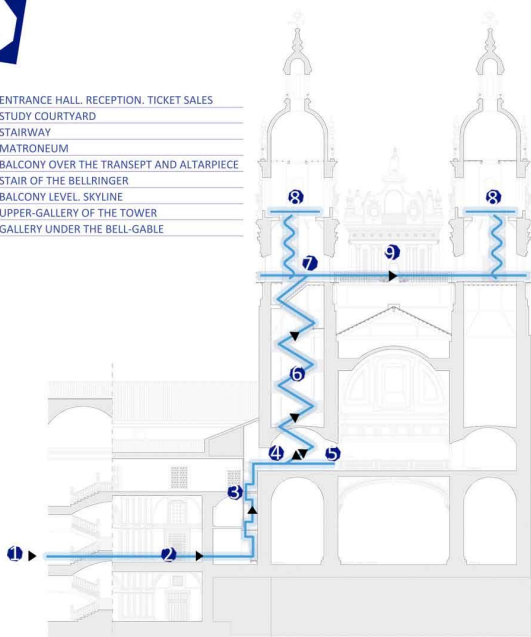




# La Clerecía tower tour



- 1 ENTRANCE HALL, RECEPTION, TICKET SALES
- 2 STUDY COURTYARD
- 3 STAIRWAY
- 4 MATRONEUM
- 5 BALCONY OVER THE TRANSEPT AND ALTARPIECE
- 6 STAIR OF THE BELLRINGER
- 7 BALCONY LEVEL, SKYLINE
- 8 UPPER-GALLERY OF THE TOWER
- 9 GALLERY UNDER THE BELL-GABLE



## SCALA COELI

SECCIÓN POR ESCALERA E. 0 1 5 10 7

PRICES: Single ticket: €3.75  
Single ticket (group): €3.25

## SCALA COELI/VITA IGNATII

PRICES: Combined single ticket: €6  
Combined single ticket (group): €5

Bookings: <https://salamancaymas.es/>

OPENING TIMES: December, January, February: from 10:00 to 18:00 h  
From March to November: from 10:00 to 20:00 h

\*Night-time guided tours are available throughout most of the year.



Bookings: 923 277 174 / [info@torresdelaclerecia.com](mailto:info@torresdelaclerecia.com)  
[www.torresdelaclerecia.com](http://www.torresdelaclerecia.com) / Calle Compañía, 5. 37002 SALAMANCA



UNIVERSIDAD PONTIFICIA  
DE SALAMANCA